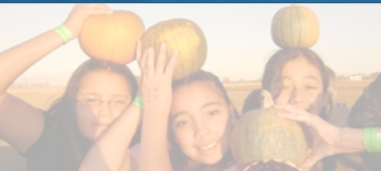


• 2007—2008

Social Venture Partners Boulder County

■ Biennial Report

S O C I A L
V E N T U R E
P A R T N E R S
B O U L D E R
C O U N T Y



At Social Venture Partners Boulder County (SVP) our mission is to strengthen the organizational capacity and sustainability of local nonprofits while inspiring the philanthropy and volunteerism of our partners. As I write today, there has never been a more important time in our nine-year history to deliver on our mission for this community. The past two years began with the continuation of a roaring economy and ended with its subsequent collapse. Demand for non-profit sector services has been steadily increasing while resources face a downward trend. SVP is in the unique position to leverage both economic and human capital to our investees (grantees) allowing them to do what they do best with maximum effectiveness. More than ever the current economic climate has demonstrated the importance of our values:

- *Nurturing the philanthropy and volunteerism of our partners*
- *The power of leverage, through our pooled giving model, combining both intellectual and financial capital to strengthen non-profits*
- *Capacity building as a strategy to effect change and produce results, through the hard work of both our donor partners and non-profits*
- *Engaging individual philanthropists, community leaders, non-profits, foundations, and businesses in our work*
- *Dedicating diverse resources to areas of identified community need*

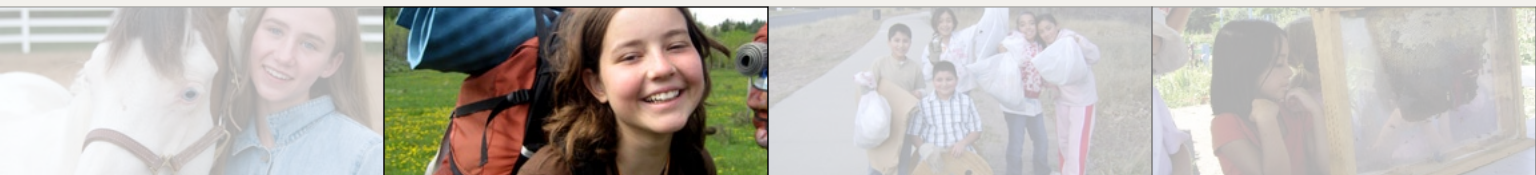
Active philanthropy's role in providing for the well being of our society has never been greater. SVP finds itself in a unique position to assist others and prosper as a result.

We are proud of our considerable accomplishments over the past two years. SVP partners and collaborators have volunteered hundreds of hours with six investees, helping them improve infrastructure, build leadership, and strengthen sustainability. At the end of 2007, we said goodbye to our long-serving Executive Director and welcomed a new one to great success. We also established a new no-cost education series open to all Boulder County nonprofits to high acclaim and strong attendance. This is in addition to ongoing education sessions for our partners on such topics as engaging family in philanthropy, consulting tips & tools, and resources for strategic giving. We finalized our strategic plan and have implemented three goals on target, only two remain. Our partners remain highly satisfied with their SVP experience and continue to expand their overall philanthropic activities while our investees receive significant long-term benefits from their partnership with SVP. In the turbulent times around us, we have much to be proud of.

Our future looks even brighter. We are one of the few organizations that delivers both financial resources and hands-on business expertise to our investees. Thanks to the skills, time and efforts of all our volunteers, we provide considerable benefits to the Boulder County non-profit community. There is no better value in philanthropy today. It is SVP's goal to expand our partnership so we can expand from five to seven simultaneous investees by 2011. We welcome your support by becoming a partner. Please read on to learn what we have accomplished and consider joining us as we work to make this beautiful place we call home a better place for everyone.



Dan W. Catlin, 2008-2009 Chair





Women's Wilderness

“We definitely enjoy realizing that we are making a difference, the excitement and energy that come from working with a group passionately committed to a cause, and having thoughtful discussions with our teenagers about how we want to help others.”

—Jennifer Hopkins, Partner since 2005

“Being able to see the effect I’ve made is the most fun thing about being a philanthropist. I enjoy watching non-profits flourish as well as helping its leadership.”

—Isabel Mc Devitt, Partner since 2007

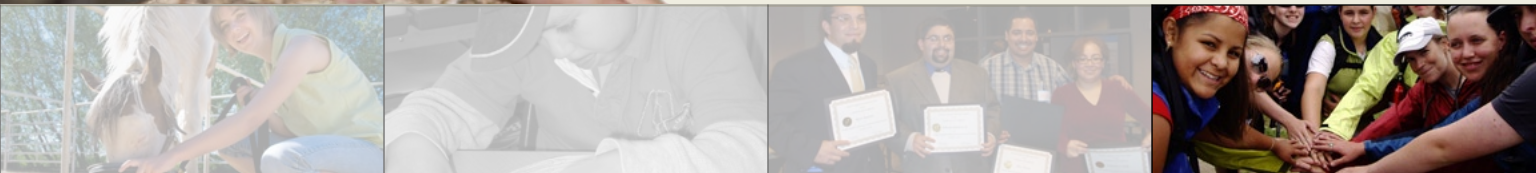
“SVP is an amazing way to explore philanthropy with our peers in a structured and leveraged way.”

—Brad Feld and Amy Batchelor,
Partners since 2000

“SVP Partners, I want to thank you again for all your support over the last four years. I feel a great deal of confidence in our sustainability and growth as we graduate from SVP. We have big dreams thanks to your efforts. It has been a privilege to get to know many of you.

The moral support and encouragement we received are extremely valuable.”

—Lee Shainis,
Intercambio Executive Director



Since its 1997 inception in Seattle, Social Venture Partners (SVP) has created a platform for an international network of accomplished individuals who are able to combine their passion for philanthropy with their professional, volunteer, or life skills in order to aid in the success of nonprofits experiencing growth. SVP also informs, inspires, and prepares member partners to have a greater philanthropic impact.

SVP Boulder County was founded in 2000 by local leaders, Amy Batchelor and Andrew Currie, with the support of The Community Foundation. In our first nine years we have invested over \$840,000 and thousands of volunteer hours in thirteen Boulder County nonprofit organizations. Our grant making is currently focused on Early Child Care & Education, Youth Development Programs During Out-of-School Time, Strengthening Educational & Economic Opportunities for Latinos, Health Care Access, and Housing & Homelessness.

SVP Partners Build Capacity in Ten Core Areas:

- Mission, Vision, Strategy & Planning
- Program Design & Evaluation
- Human Resources
- Management Team Leadership
- Information Technology
- Financial Management
- Fund Development
- Board Leadership
- Legal Affairs
- Marketing, Communications, & External Relations



Colorado Youth Program

To become a partner in SVP, individuals, businesses and foundations contribute \$5,000 or more per year; collectively decide which non-profits to support with their funds through a vigorous selection process; and jump into volunteer projects that will help investees do their work better. Each partner's financial contribution is leveraged into multi-year operating grants ranging from \$10,000 to \$30,000 per year for each investee.

Unique to SVP, our hands-on model of philanthropy allows for our contributing partners to offer a variety of professional and consulting services that non-profits need but often cannot afford. While providing these valuable services, our partners learn and grow as philanthropists leading to a win-win for all involved.

Across the SVP International network of twenty-five cities, over \$31 million has been contributed to more than 200 non-profits, with partners' volunteer efforts thus far valued at \$60 million. It is the belief of SVP "that the more people get involved in their local communities, the more likely we are to find solutions to some of society's most difficult problems".

Welcome to the new face of philanthropy, transforming the way that non-profits do business and catalyzing donors and how they give.



In 2007 & 2008, SVP supported six Boulder County non-profit organizations with grants totaling \$220,000 and over 1,000 volunteer hours (valued conservatively at \$100 per hour). We refer to these non-profits as investees, rather than grantees, because we do much more than write checks. We invest in their future capacity and sustainability.

COLORADO YOUTH PROGRAM (2005-2008) www.coloradoyouthprogram.org

Executive Director: Steve Ehredt (current), Robyn Johnson (former)

SVP Lead Partner: Dwayne Nesmith (2008), Paul DiMarchi (2005-2007)



The Colorado Youth Program connects kids between the ages of 11 and 17 to nature, their communities and their inner-strength through year-round recreation, education and service. During the school-year, CYP runs Adventure Club and activities include service learning projects. In the summer, CYP operates Mountain Summer Camp in western Boulder County. Each year about 80% of CYP participants come from families making below the median Boulder County income.

Accomplishments completed with the help of SVP Partners

- Executed new and improved program evaluation
- Purchased and implemented a new donor database
- Developed the board of directors
- Created fiscal and investment policies
- Developed and grew the volunteer program

SVP Boulder County Funding History:

2005: \$15,000 • 2006: \$15,000 • 2007: \$15,000 • 2008: \$15,000

GROWING GARDENS (2006-PRESENT) www.growinggardens.org

Executive Director: Ramona Clark **SVP Lead Partner:** Paul Heffron

Growing Gardens enriches the lives of Boulder County residents through environmentally sustainable gardening programs that empower people to experience a direct and deep connection with plants, the land and each other. SVP's support of Growing Gardens is directed towards the ¡Cultiva! youth project, a youth-operated organic garden and market.

Accomplishments completed with the help of SVP Partners:

- Creation of a development strategy that resulted in 33% growth in three years
- Developed an Educational and Outreach Program
- Executed a new evaluation process for programs
- Formation of a business plan that led to a 63% increase in earned income
- Implementation of an online system for registration

SVP Boulder County Funding History: 2006: \$15,000 • 2007: \$25,000 • 2008: \$20,000





INTERCAMBIO DE COMUNIDADES (2005-2008) www.intercambioweb.org

Executive Director: Lee Shanis **Lead Partner:** Scott Andrews (2008), Scott Koski (2005-2007)

Intercambio, which means exchange of communities, was founded in October 2000. Intercambio's mission is to build respectful communities and broaden opportunities for immigrants through language education, cultural exchange and friendship. This is done by providing free and low cost English classes to over 800 immigrant adults through a large volunteer corp.

Accomplishments completed with the help of SVP Partners:

- Defined organizational values
- Developed a 3-year comprehensive strategic plan
- Provided valuable on-going personal coaching for the Executive Director and Development Director
- Strengthened strategy for replication and definition of Intercambio
- Purchased and executed a new donor database

SVP Boulder County Funding History:

2005: \$25,000 • **2006:** \$30,200 • **2007:** \$25,000 • **2008:** \$15,000

“Social Venture Partners’ elegant, virtuous-circle model produces smarter, more engaged donors and stronger nonprofits.” —*Fast Company*, January 2005

THE WOMEN’S WILDERNESS INSTITUTE (2006 – PRESENT)

www.womenswilderness.org

Executive Director: Beth Davis (current), Laura Tyson (former)

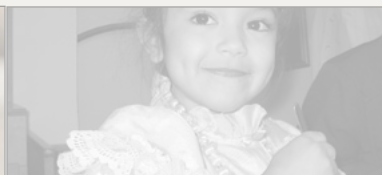
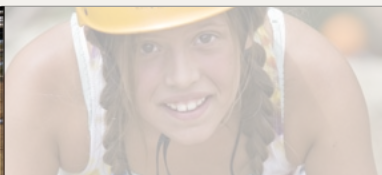
Lead Partner: Lisa Nesmith (2006-2008)

The Women’s Wilderness Institute strengthens the courage, confidence, and leadership qualities of girls and women, through the support and challenge of wilderness- and community-based experiences. The Women’s Wilderness Institute was founded in 1998 with a vision of transmitting the powerful teachings of the outdoors in a program model accessible and relevant to girls and women. SVP supports the girls programming.

Accomplishments completed with the help of SVP Partners:

- Made a marketing video highlighting the girl’s programs and services
- Led a logic-model process for the creation of a new after-school girls program
- Implemented new fundraising strategies
- Created on-line registration for participants
- Developed a board committee structure

SVP Boulder County Funding History: **2006:** \$30,000 • **2007:** \$30,000 • **2008:** \$20,000





MEDICINE HORSE (2003–2007) www.medicinehorse.org

Executive Director: Kathy Johnson (current),
Diane Kennedy & Karolyn Gazella (former)

Lead Partner: Laura Kinder (2006-2007),
Sophie and Jack Walker (2003-2005)

Medicine Horse Program (MHP) is dedicated to creating breakthroughs in increased self-esteem, self-confidence, and quality of life issues for low-income adolescents, families and individuals through Equine Assisted Growth and Learning Experiences. Group and individual programs are available. Target population served: low-income, at-risk youth ages 10-18 in Boulder County.

Accomplishments completed with the help of SVP Partners:

- Expanded fundraising, donor and volunteer databases
- Developed testing and outcomes measurement
- Improved fundraising
- Provided management of leadership transition

SVP Boulder County Funding History:

2003: \$20,000 • **2004:** \$30,000 • **2005:** \$15,000 • **2006:** \$30,000 • **2007:** \$30,000

WILD PLUM CENTER FOR YOUNG CHILDREN AND FAMILIES

(FORMERLY LONGMONT CHILDREN’S COUNCIL) (2008 – PRESENT) www.longmontchildrenscouncil.org

Executive Director: Amy Ogilvie **Lead Partner:** Dennis Berry

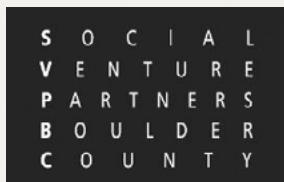
The Wild Plum Center for Young Children and Families (WPC) collaboratively develops learners through community-centered services. To accomplish this mission with the low-income population served, they help families remove barriers to their child’s education and ensure that those children are ready to learn in kindergarten. WPC serves students in Head Start preschool classes located in several locations throughout Longmont.

Accomplishments completed with the help of SVP Partners:

- Identified need for a Development Director and assisted in the hiring and training
- Lead the development of a long-range strategic plan that positions WPC to be a solid competitor in economic stimulus federal grant funding
- Redesigned the Board structure
- Trained board members to participate in fundraising
- Participated in the establishment of a new identity including a new name, logo, mission, vision and values.

SVP Boulder County Funding History: **2008:** \$25,000





The Community Foundation BOULDER COUNTY

SVP is a Fund of The Community Foundation. Social Venture Partners Boulder County (SVP) strengthens the organizational capacity and sustainability of local non-profits while inspiring the philanthropy and volunteerism of our partners.



Social Venture Partners Boulder County is a member of Social Venture Partners International, a network of accomplished individuals who combine the power of business with a passion for philanthropy. We bring our collective expertise and resources to promising nonprofits, collaborating with them to transform communities in the USA, Canada, and Japan.

Do you know someone who would like to become involved in one of our sister-cities? Visit www.svpi.org for details about other SVP affiliates.

2008 SVP Executive Committee

Dan W. Catlin • Chair & SVP International Board Member

Ruth Henderson • Treasurer

Caryn Capriccioso • Member At-Large

Paul Heffron • Member At-Large

Rich Hoops • Member At-Large

Outgoing Executive Committee Members

Terry Morreale, 2003-2007

All photos contained in this report were provided by SVP investees including Colorado Youth Program, Growing Gardens, Intercambio, Medicine Horse Program, The Women's Wilderness Institute, and Wild Plum Center for Young Children and Families. **Design** by Stylus Creative.

Social Venture Partners Boulder County

1123 Spruce Street, Boulder, CO 80302

www.svpbouldercounty.org

303.442.0436 x114

Jennie Arbogash, Executive Director

jennie@svpbouldercounty.org

